



HOPE POWER

KNITWEAR LTD.

DONGGUAN SONGJI KNITTERS LTD.

***"Knitwear Excellence, End-to-End***

***– Your All-in-One Partner!"***



## ABOUT US

Hope Power Knitwear Limited, a Hong Kong-based company, boasts a rich history spanning over 30 years, marked by a steadfast commitment to excellence in knitwear manufacturing. Established with a vision to redefine the standards of high-end fashion knitwear, the company has evolved into a trusted industry leader with a reputation for delivering exceptional-quality products and services at highly competitive rates.

Since its inception, Hope Power Knitwear Limited has been at the forefront of innovation, leveraging cutting-edge technologies and adopting best practices to ensure that its knitwear offerings meet and exceed the stringent demands of the fashion industry. The company's unwavering dedication to quality has positioned it as a preferred choice for clients seeking premium knitwear solutions.

One of the key pillars of Hope Power Knitwear Limited's success is its emphasis on cultivating enduring partnerships. Over the past three decades, the company has invested in building strong, mutually beneficial relationships with its business partners. This collaborative approach has not only fostered trust but has also been instrumental in the sustained growth and success of the company.

The journey of Hope Power Knitwear Limited reflects a continuous commitment to adaptability and client-centricity. The company has consistently evolved to meet the changing needs of the dynamic fashion landscape, ensuring that its products and services remain on the cutting edge of industry trends.

As Hope Power Knitwear Limited looks back on its remarkable journey, it does so with a sense of pride in its achievements and a renewed commitment to delivering excellence in high-end fashion knitwear. With a legacy built on quality, innovation, and enduring partnerships, the company stands poised to continue shaping the future of knitwear manufacturing in the years to come.





## VISION

**“TO BE THE PREMIER KNITWEAR MANUFACTURER AND SUPPLIER IN THE FASHION INDUSTRY.”**

We achieves this vision through these core attributes:

### Creative

Constantly coming up with innovative ideas on product design and service

### Knowledgeable

Aware of what's happening in the industry and keep on top of fashion and consumer trends

### Quality-driven

Implement quality standards in our management that apply to all levels of production and customer service.

### Perform with Integrity

Act ethically and responsibly, keeping promises and honouring agreements by doing the right thing, even if it is not always easy.

### Partnership

Develop long-term, mutually beneficial relationships with our customers and suppliers.

## MISSION

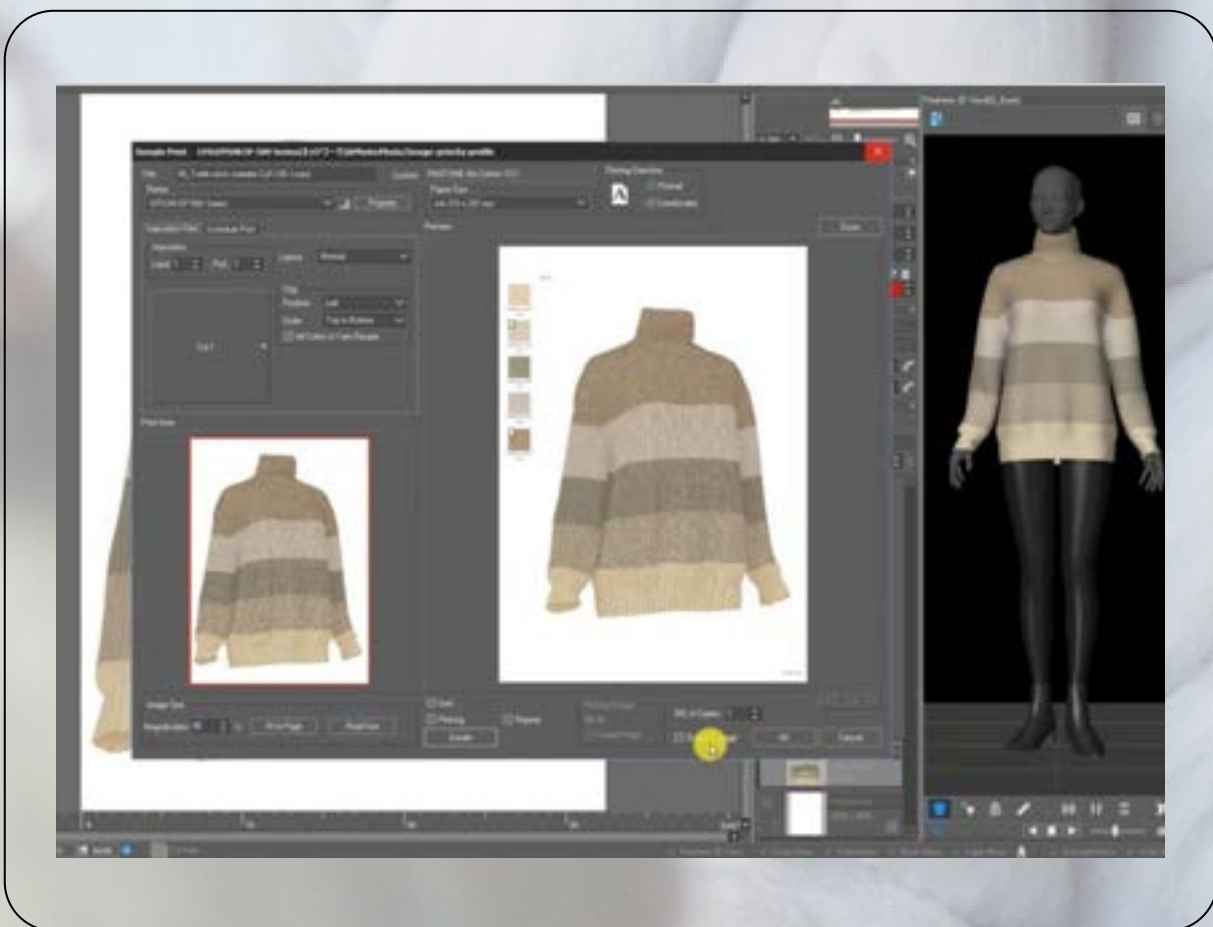
**“TO MEET THE HIGHEST QUALITY STANDARDS AND REQUIREMENTS OF OUR CUSTOMERS AND PROVIDE A RELIABLE AND EFFICIENT SERVICE EVERY TIME”**



## POSITION

# ONE-STOP SOLUTION KNITWEAR PARTNER

Hope Power Knitwear Limited is positioned as a comprehensive and reliable One Stop Solution Knitwear Partner. With a commitment to excellence, they offer a full spectrum of services and solutions across the knitwear industry. From design conceptualization to manufacturing and delivery, Hope Power Knitwear Limited serves as a seamless and efficient partner for businesses looking to navigate the intricacies of knitwear production.



Their holistic approach encompasses every stage of the knitwear supply chain, ensuring a streamlined and hassle-free experience for clients. From sourcing quality materials to employing advanced manufacturing processes, Hope Power Knitwear Limited is dedicated to delivering products that meet the highest standards of quality, innovation, and sustainability.

As a One Stop Solution Knitwear Partner, we take pride in our ability to adapt to customer needs, offering customised solutions that address unique design requirements, timeframes, and financial constraints. With a focus on collaboration and openness, Hope Power Knitwear Limited promotes itself as a strategic partner for companies looking for a comprehensive and efficient partner in the fast-paced knitwear industry.





# Design & Innovation

## Expertise and Specialization:

Hope Power employs a team of highly qualified and experienced specialists who can produce all forms of knitting, including computer knit, hand knit, crochet, jacquard, intarsia, circular knitting, and the most recent Whole-Garment knitting technology, with gauges ranging from 1.5 to 18. Our team comprises individuals who bring a wealth of expertise and specialization to the table. Each member is meticulously selected for their proficiency in their respective fields, ensuring a diverse skill set that collectively contributes to our overall capability.

## Years of Experience:

Our team is constantly up-to-date on the latest knitwear trends and is highly capable of combining a variety of add-on procedures such as beading, embroidery, boiled wool, special washing, printing, and so on. With a collective experience of over 20 years in the industry, we are committed to providing our clients with seasoned professionals who have overcome numerous challenges and excelled in delivering high-quality solutions.

## Continuous Learning:

In an ever-evolving technological landscape, our technicians are dedicated to continuous learning and staying abreast of the latest advancements in their domains. Regular training programs and professional development initiatives ensure that our team remains at the forefront of industry trends and innovations.

## Problem-Solving Prowess:

One of the hallmarks of our team is their exceptional problem-solving prowess. Whether faced with routine maintenance tasks or intricate technical challenges, our technicians approach each situation with a combination of analytical thinking, creativity, and a collaborative spirit.

## Client-Centric Approach:

At the core of our team's ethos is a commitment to a client-centric approach. Our technicians understand the unique needs and challenges of our clients, working collaboratively to provide tailored solutions that align with their goals and objectives.

## Cutting-Edge Technology:

Equipped with the latest tools and technologies, our team ensures that they are well-prepared to tackle projects of varying complexities. Using the SHIMA SEIKI software APEX design system, provide customers with 2D and 3D virtual designs for preview and adoption. This commitment to using cutting-edge technology enhances the efficiency and precision of our technical solutions.

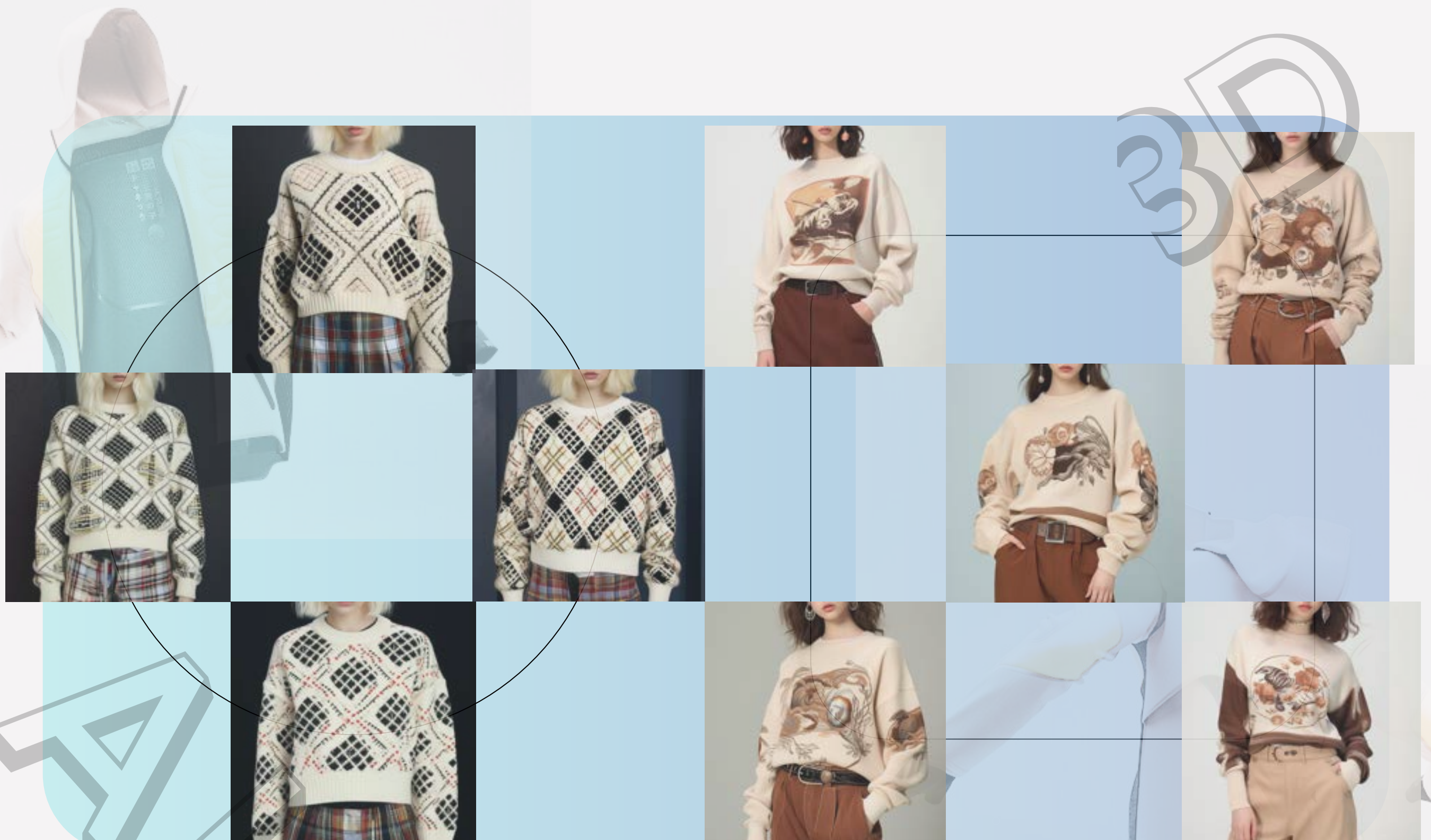




# 3D VIRTUAL DESIGN

## Unleashing the Power of AI in Fashion Design

In an industry that thrives on imagination and forward-thinking, we have embraced the transformative power of AI to reimagine the fashion design process. Our AI design system is not just a tool; it's a creative collaborator that augments human ingenuity, bringing a fresh perspective to the way we conceptualize and craft fashion. Through the lens of advanced algorithms and data analysis, our AI seamlessly navigates through global trends, consumer behaviours, and cultural shifts. This invaluable insight serves as a wellspring of inspiration for our design teams, influencing every step of the creative journey. The result is a collection of designs that not only captures the essence of contemporary style but also reflects a harmonious blend of human emotion and technological precision.





# PRODUCTS

We take immense pride in our reputation as a professional sweater manufacturer specializing in cashmere. Our team of skilled artisans combines traditional craftsmanship with modern techniques, ensuring each sweater is a testament to precision and attention to detail. At the heart of our manufacturing process lies our commitment to using only the finest cashmere fibers. We source premium materials to create sweaters that not only provide luxurious comfort but also exemplify the exceptional quality that defines our brand. Our dedication to perfection extends to the tailored fit of each sweater. Whether classic or contemporary, our designs are meticulously crafted to complement various styles, ensuring an impeccable fit that exudes sophistication. Recognizing the unique preferences of our clients, we offer customization options for those seeking a truly distinctive style. From choosing colors to selecting patterns, our bespoke services allow individuals to express their personal tastes through our exquisite cashmere creations.





# FACILITY IN CHINA



**LOCATION : DALANG, DONGGUAN**

**PLANT AREA : ABOUT 9000 / M2**

**NO. OF EMPLOYEES : ABOUT 280 WORKERS**

**NO. OF KNITTING MACHINES : 150 UNITS  
(1.5 GG TO 18 GG)**

**NO. OF LINKING MACHINES : 80 UNITS**

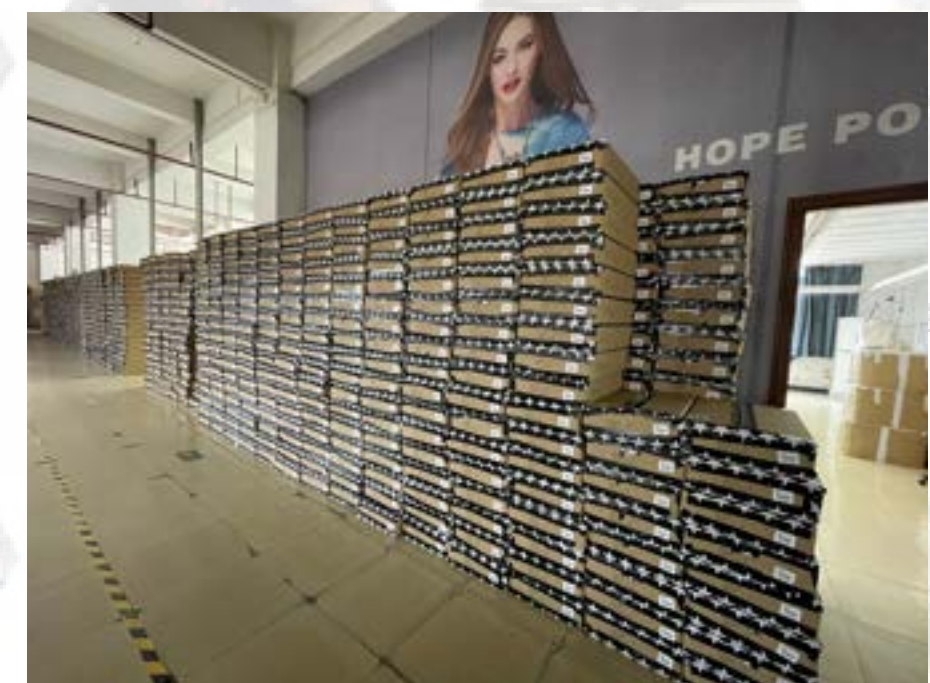
**MONTHLY CAPACITY : 100,000 PCS**

**MOQ : 200 /PCS/STLYE**

**PROTO SAMPLE LEAD TIME : 7 -14 DAYS**

**SMS LEAD TIME : 14 - 30 DAYS**

**PRODUCTION LEAD TIME : 21 - 60 DAYS**





## FACILITY IN CAMBODIA



**LOCATION : KOH THOM, KANDAL**

**PLANT AREA : ABOUT 10,000 / M2**

**NO. OF EMPLOYEES : ABOUT 350 WORKERS**

**NO. OF KNITTING MACHINES : 200 UNITS  
(9 GG TO 12 GG)**

**NO. OF LINKING MACHINES : 150 UNITS**

**MONTHLY CAPACITY : 200,000 PCS**

**MOQ : 1,000 /PCS/STLYE**

**PROTO SAMPLE LEAD TIME : 7 -14 DAYS**

**SMS LEAD TIME : 14 - 30 DAYS**

**PRODUCTION LEAD TIME : 30 - 60 DAYS**





# CORE VALUE



## Industry Leadership:

Our dedication to quality, social compliance, and sustainability positions us as leaders in our industry. We recognize that these principles are not only integral to responsible business but are also crucial elements that resonate with our clients and partners.

## Quality Excellence:

Quality is the cornerstone of everything we do. Our commitment to excellence is reflected in every product, service, and interaction we deliver. Rigorous quality control measures are embedded in our processes to ensure that each deliverable meets or exceeds the highest industry standards.

## Social Compliance:

Our dedication to social compliance extends beyond mere adherence to regulations. We recognize the importance of ethical and responsible business practices. Our engagements are guided by a commitment to fair labor practices, human rights, and fostering a positive impact on the communities we touch.

## Sustainability as a Core Value:

Sustainability is not just a buzzword for us; it is ingrained in our core values. We believe that businesses have a responsibility to minimize their environmental footprint and contribute to a more sustainable future.

## Our certificates but not limited : BSCI | WRAP | MADEOWN | HIGG INDEX







## Assurance of Sustainable Sourcing for Discerning Customers

We understand the growing importance of environmental responsibility and social consciousness in today's business landscape. That's why we have carefully chosen suppliers who share our dedication to sustainability, ensuring that every stage of our supply chain aligns with the highest standards. Our material suppliers adhere to rigorous sustainability practices, from responsible sourcing to environmentally-friendly production methods. By prioritizing eco-friendly materials and ethical manufacturing processes, they contribute to a circular economy and minimize the environmental impact associated with our products. We take pride in the fact that our materials not only meet but exceed the expectations of the most demanding customers. Whether it's reducing carbon footprints, minimizing waste, or supporting fair labor practices, our suppliers are at the forefront of the sustainability movement.





## STRATEGIC PARTNERS

We treat our partners not merely as collaborators but as integral members of our extended family. Your contributions have been instrumental in our joint successes, and we deeply appreciate the trust you have placed in us. Our shared values and commitment to excellence have been the bedrock of our partnership. From the outset, we recognized the importance of aligning our goals, fostering transparency, and cultivating a relationship built on mutual respect. As we look toward the future, we are excited about the prospect of further fortifying our collaboration. Our vision extends beyond individual transactions; we are committed to building a foundation for enduring success through a long-term, symbiotic relationship.



Effective communication is the cornerstone of any lasting partnership. We encourage open dialogue and transparent exchanges to ensure that our collaboration evolves to meet.

**For enquiries, please contact :**  
**Director : Samuel Yiu ( [samyiu@hopepower.com](mailto:samyiu@hopepower.com) )**  
**Merchandising Manager : Michael Ho ( [michael@dgjianji.com](mailto:michael@dgjianji.com) )**  
**Sales Manager: Roy Huang ( [roy.huang@dgjianji.com](mailto:roy.huang@dgjianji.com) )**



## **CONTACT US**

### **Hong Kong Head Office:**

**Hope Power Knitwear Limited  
19/F., Flat B1, Prince Industrial Building, 106 King Fuk Street, San Po  
Kong, Kowloon , Hong Kong.**

**Tel (852) 2322 0886 / Fax (852) 2325 0010**

**Web Site: [www.hopepower.com](http://www.hopepower.com) Email: [info@hopepower.com](mailto:info@hopepower.com)**

### **China Factory:**

**Dongguan Songji Knitters Limited  
No. 13 Juxin 3rd Road, Xiangwei Village, Dalang Town, Dongguan  
City, China , Postal Code: 523786**

**Tel: (86) 769 8388 9292 Fax: (86) 769 8388 7322**

### **Cambodia Factory:**

**National Road No.21 Prep Bek Village, Koh Thom "B" Commune,  
Koh Thom District, Kandal Province, Cambodia**

### **New York Representative Office:**

**Hope Power New York LLC 244 Fifth Avenue, Ste J-201  
New York , NY 10001**

### **Paris Representative Office:**

**2a, Rue des Roseaux 67920 Sundhouse**